

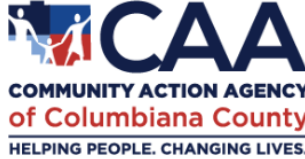


COMMUNITY ORAL HEALTH TRANSFORMATION (CORHT) COMMUNITY CALL

Introducing the Three Domains Framework

January 19, 2021

Welcome, Health Center Teams!



Thank you for posting on the Discussion board!

The screenshot shows the 'CORHT INITIATIVE' discussion board. At the top, there are navigation tabs: 'Our Approach', 'News & Events', 'Grantmaking', 'Research', 'Care Improvement', and 'Thought Leaders'. Below these are sub-tabs: 'Home', 'Resources', 'Webinars', 'Calendar', 'Discussions', and 'Thought Leaders'. The 'Discussions' tab is active. The main heading is 'CORHT INITIATIVE'. On the left, there is a list of categories: Coding & Billing, Data, Reporting/Measurement, General Communications, Infection Control, Minimally Invasive Care, Risk-Stratified Care, Management, and Teledentistry. A search bar is on the right. The main content area features a post titled 'Welcome to the CORHT Discussion Board' with a 'General Communications' tag. The post text reads: 'Hello CORHT Teams! Welcome to the discussion board. As a reminder, this is where we will post reminders, announcements, prework, and other resources. Please subscribe to all categories to make sure you receive notifications! Let us know that you saw this message by replying to this post with your favorite holiday treat :)'. It shows '15 Comments' and '17 Followers'. There is an 'Add Discussion' button and a 'Start Date Desc' dropdown menu.

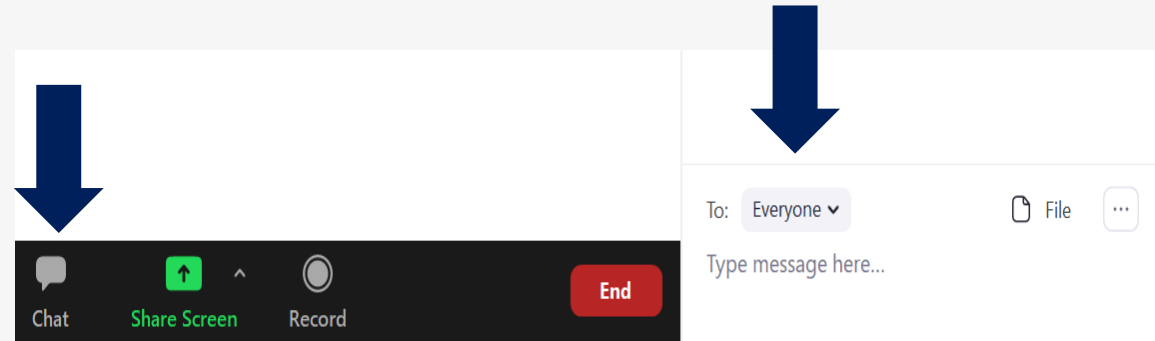
...and we apologize for the bug resulting in duplicate comments

Meantime fix: Once you click comment, wait a bit so it can [slowly] process and post once



Session Participation and Zoom Features

CHAT



Mute On Entry



Turn Video On



GLOSSARY OF TERMINOLOGY

Term	Definition	Plain Language	Reference
Oral Health	A fundamental component of health, physical and mental well-being, oral health is multi-faceted and includes the ability to speak, smile, smell, taste, touch, chew, swallow and convey a range of emotions through facial expressions with confidence and without pain, discomfort and disease of the craniofacial complex.	Oral health is a key indicator of overall health, well-being and quality of life. Oral health can include but often extends beyond conditions of disease.	FDI World Dental Federation https://www.fdiworld-dental.org/oral-health/fdi-definition-of-oral-health
Dentistry	Dentistry is defined as the evaluation, diagnosis, prevention and/or treatment (nonsurgical, surgical or related procedures) of diseases, disorders and/or conditions of the oral cavity, maxillofacial area and/or the adjacent and associated structures and their impact on the human body; provided by a dentist, within the scope of their education, training and experience, in accordance with the ethics of the profession and applicable law.	The evaluation, diagnosis, and treatment of conditions in the oral cavity.	American Dental Association https://www.ada.org/en/education-careers/careers-in-dentistry/general-dentistry
Preventistry	Prioritizes preventive care, focuses on value over volume and uses technology to increase access and transform health care systems leveraging four components: care, value, innovation, and transformation.	Dental care that prioritizes prevention and whole-person health.	DentaQuest Partnership for Oral Health Advancement https://dentaquest.com/oral-health-resources/preventistry/
Disease Management	The concept of reducing health care costs and improving quality of life for individuals with chronic conditions by preventing or minimizing the effects of the disease through integrated care. Disease management includes a system of coordinated health care interventions and communications for defined patient populations with conditions where self-care efforts can be implemented.	Minimizing and managing disease processes using integrated care that empowers patients to stay healthy.	Academy of Managed Care Pharmacy https://www.amcp.org/about/managed-care-pharmacy-101/concepts-managed-care-pharmacy/disease-management
Population Health	The health outcomes of a group of individuals, including the distribution of such outcomes within the group. Population health includes health outcomes, patterns of health determinants, and policies and interventions that link these two.	The health outcomes of a group of individuals, including the distribution of such outcomes within the group.	American Journal of Public Health https://ajph.aphapublications.org/doi/full/10.2105/AJPH.93.3.380
Population Health Management	A systematic process of utilizing data on patient populations to target interventions for better health outcomes at lower cost, with a better care experience.	Systems targeting interventions for the best	National Association of Community Health Centers http://www.nachc.org/wp-

Find this under
'Resources' in the online
hub

Agenda



- 01 • **Introducing the Three Domains**
- 02 • **Sharing Experience: The Dimock Center**
- 03 • **Discussion & Taking Action**
- 04 • **Wrap Up & Next Steps**

Today's Clinical Experts



Sean Boynes, DMD, MS
VP of Health Improvement
DentaQuest Partnership



Sharity Ludwig, EPDH, MS
Director of Clinical Innovations
Advantage Dental



Shireen Khan, DMD, BDS, BSc
Dental Director
The Dimock Center

Discussion Board Prework Questions: Reflection

- Why did you decide to participate in CORHT and adopt the Three Domain Framework?

Alignment with mission to provide whole-person care

Learn about how to provide more personalized care

Learn how to approach MIC & Risk-based care

Expand use of teledentistry beyond emergencies

Move toward value-based care in oral health

- What are you hoping to get from the implementation of the domains approach? What changes do you want to see?

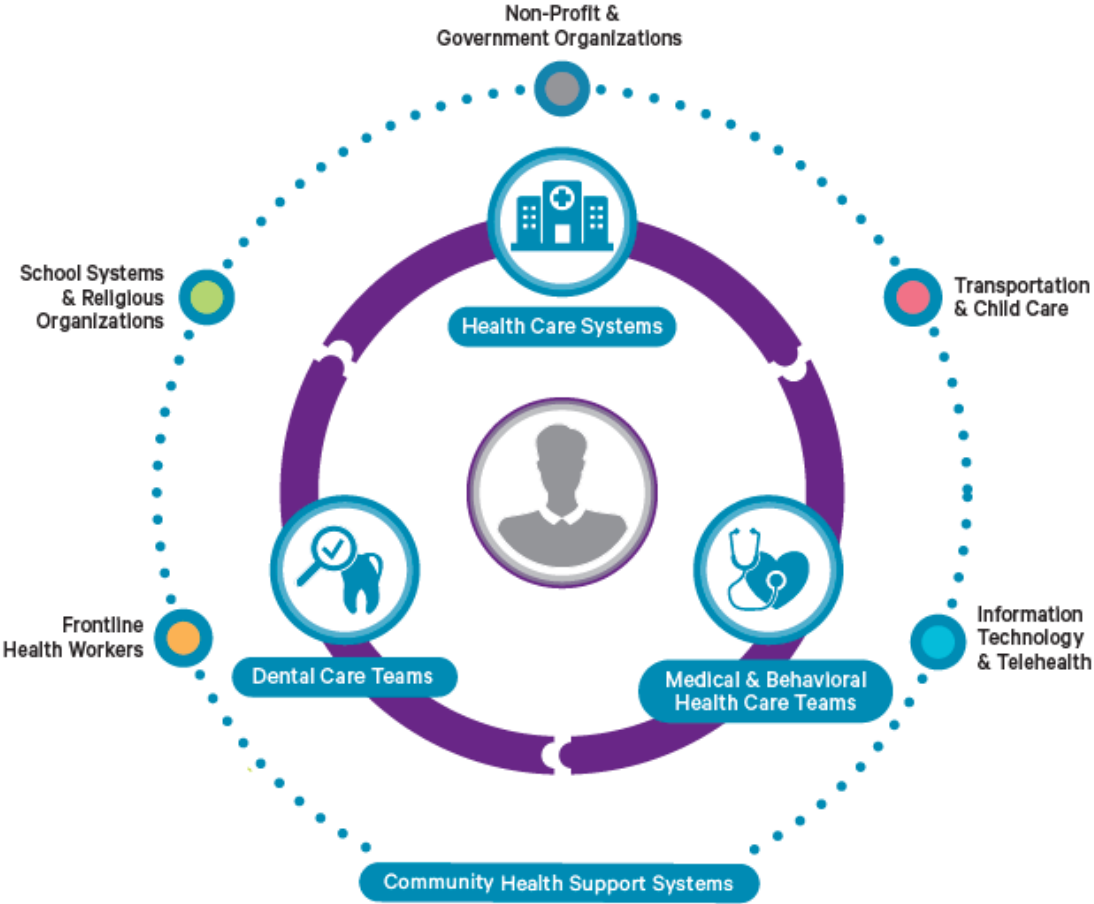
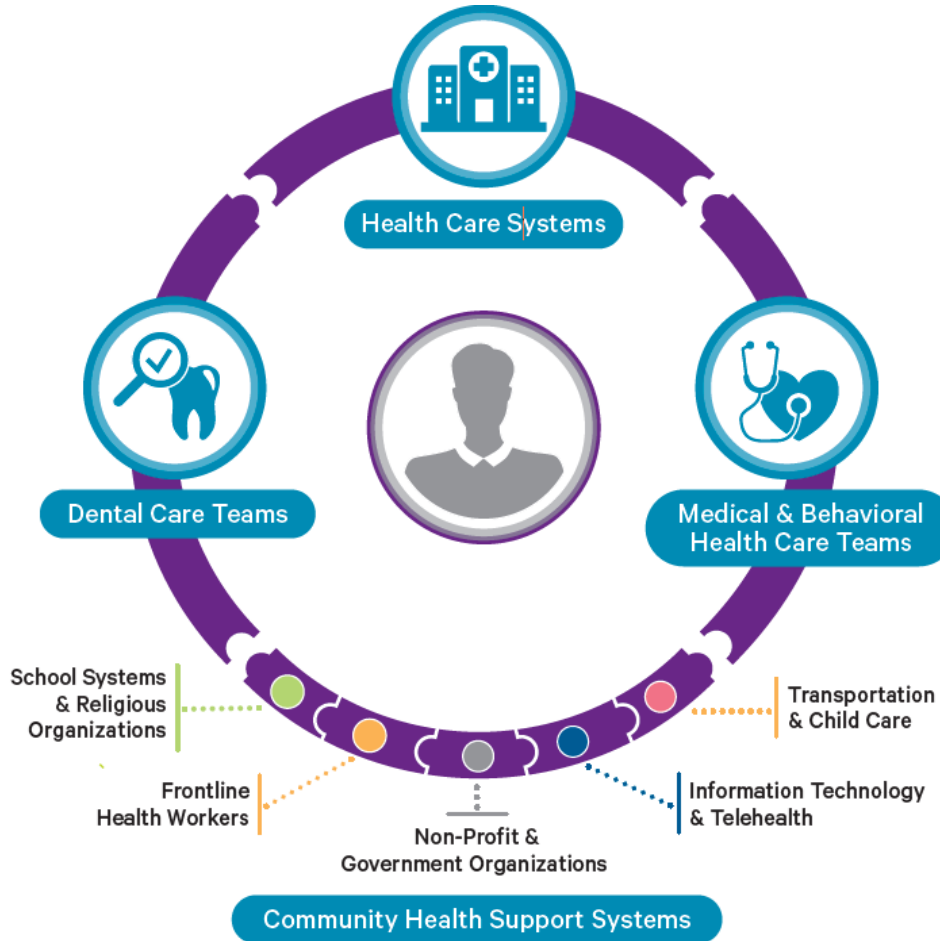
Improved patient engagement

Patients improve in oral and overall health outcomes

Improvement in medical, dental, and behavioral health integration

Meet the preventive dental visit HEDIS measure

Opportunity with Alignment



Healthier System

SOCIAL SUPPORT & SOCIAL RISK



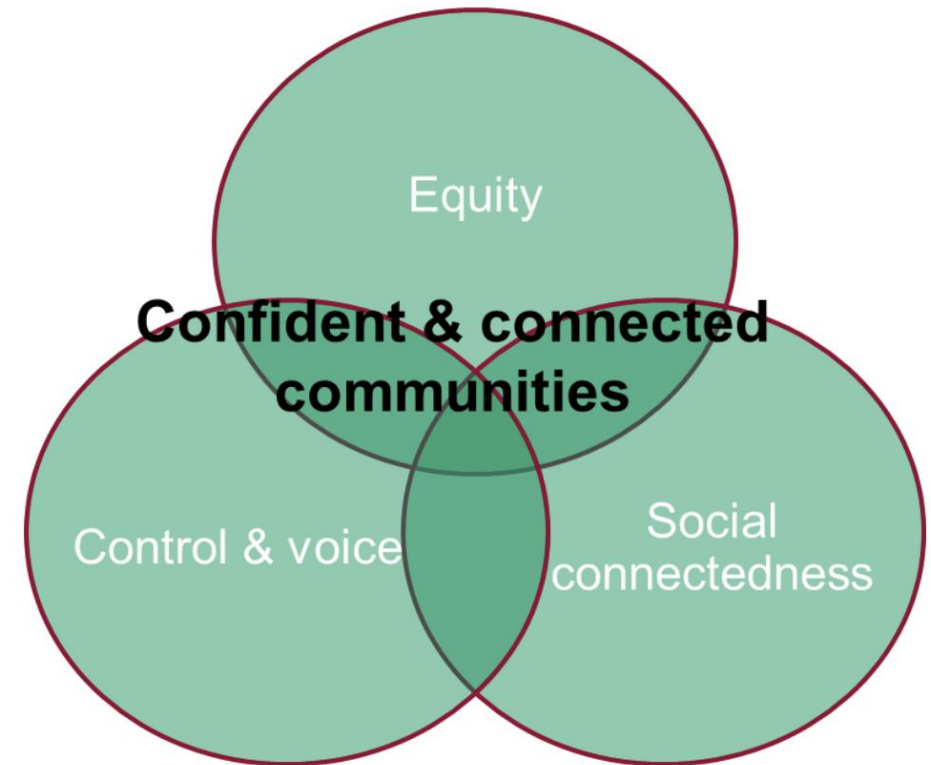
Public Health
England

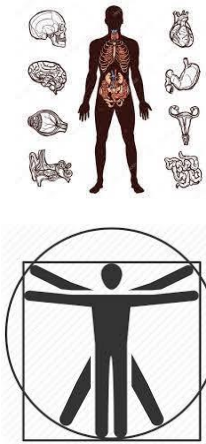
Protecting and improving the nation's health



Learn more about these terms in the glossary

A guide to community-centred approaches for health and wellbeing





Oral health is a fundamental component of health and physical and mental well-being. **Oral health** is multi-faceted and includes the ability to speak, smile, smell, taste, touch, chew, swallow, and convey a range of emotions through facial expressions with confidence and without pain, discomfort and disease of the craniofacial complex (FDI World Dental Federation).



Dentistry, the professional care of **teeth**, including professional oral hygiene and dental surgery. (Google)

Dentistry is defined as the evaluation, diagnosis, prevention and/or treatment (nonsurgical, surgical or related **procedures**) of diseases, disorders and/or conditions of the oral cavity, maxillofacial area and/or the adjacent and associated structures and their impact on the human body; provided by a **dentist**... (ADA)



The Three Domain Framework

Tele-
Prevention



Domain One builds an accessible, convenient, evidence-based virtual care approach to accompany oral health care delivery using technology for enhanced disease prevention and whole-person health.

Minimally
Invasive Care



Domain Two focuses on minimally invasive care that reverses or slows early disease stages using a program of anticipatory guidance and collaborative decision-making with patients.

Integrated &
Personalized Care



Domain Three introduces personalized oral health care that prolongs the life of hard and soft tissues by reducing tooth/tissue mortality through risk stratification, medical-dental integration, using predictive analytics, and safe, individualized surgical intervention.

The Caries Diseases Paradigm



DISEASE INDICATORS
 White spot lesions
 Restorations < 3 years
 Enamel lesions
 Caries/dentin

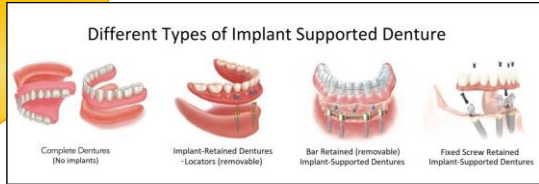
RISK FACTORS
 Pathogenic bacteria
 Absence of saliva
 Destructive lifestyle habits

CARIES DISEASE PROGRESSION

PROTECTIVE FACTORS
 Saliva and sealants
 Antibacterials
 Fluoride/Ca²⁺/PO₄³⁻
 Effective lifestyle habits
 Risk-based reassessment

ICDAS
 (International Caries Detection and Assessment System)

0		Sound tooth surface
1		First visual change in enamel
2		Distinct visual change in enamel
3		Localized enamel breakdown due to caries with visible dentin
4		Underlying dark shadow from dentin (with or without enamel breakdown)
5		Cavity with visible dentin



Social Determinants of Health | Healthy Communities | Community Assets

Risk Stratification & Population Health Management



What is risk stratification?

What is population health management?

Why are they important?

How can we start, or improve how we do them?

Our February topic

Domains Characteristics and Traits

FOCUS AREAS	DOMAIN ONE	DOMAIN TWO	DOMAIN THREE
Teleprevention	<input checked="" type="checkbox"/>		
Surgical Intervention			<input checked="" type="checkbox"/>
Bundled Coding Packages	<input checked="" type="checkbox"/>	<input checked="" type="checkbox"/>	
Preventistry	<input checked="" type="checkbox"/>	<input checked="" type="checkbox"/>	
Predictive and Personalized Care	<input checked="" type="checkbox"/>		<input checked="" type="checkbox"/>
Interoperability	<input checked="" type="checkbox"/>		<input checked="" type="checkbox"/>
Minimally Invasive Care		<input checked="" type="checkbox"/>	<input checked="" type="checkbox"/>
Aerosol Production Mitigation		<input checked="" type="checkbox"/>	<input checked="" type="checkbox"/>
Whole-Person Health	<input checked="" type="checkbox"/>	<input checked="" type="checkbox"/>	<input checked="" type="checkbox"/>
Specialty Referrals	<input checked="" type="checkbox"/>	<input checked="" type="checkbox"/>	<input checked="" type="checkbox"/>
Interprofessional Care Teams	<input checked="" type="checkbox"/>	<input checked="" type="checkbox"/>	<input checked="" type="checkbox"/>
Operational Excellence	<input checked="" type="checkbox"/>	<input checked="" type="checkbox"/>	<input checked="" type="checkbox"/>
Risk-Stratified Care	<input checked="" type="checkbox"/>	<input checked="" type="checkbox"/>	<input checked="" type="checkbox"/>
Social Determinants of Health	<input checked="" type="checkbox"/>	<input checked="" type="checkbox"/>	<input checked="" type="checkbox"/>
Value-based Oral Health Care	<input checked="" type="checkbox"/>	<input checked="" type="checkbox"/>	<input checked="" type="checkbox"/>

DOMAIN ONE: TELEPREVENTION



The Three Domain Framework



Domain One builds an accessible, convenient, evidence-based virtual care approach to accompany oral health care delivery using technology for enhanced disease prevention and whole-person health.



Domain Two focuses on minimally invasive care that reverses or slows early disease stages using a program of anticipatory guidance and collaborative decision-making with patients.



Domain Three introduces personalized oral health care that prolongs the life of hard and soft tissues by reducing tooth/tissue mortality through risk stratification, medical-dental integration, using predictive analytics, and safe, individualized surgical intervention.

Tele-prevention

Component One: Synchronous Urgent Visit

Emergency care often a gateway for preventive care and dental home

- Patient experiencing tooth pain
- Patient suffering from a broken tooth
- Pediatric patient with dental concern
- Previous referral to specialty care without follow through

Component Two: Synchronous Prevention Visit

This synchronous encounter is proactive and scheduled rather than a reactive urgent telehealth visit.

- Engagement of pregnant patients with dental care
- Disease management follow-up
- Care coordination and management for rising-risk populations
- Referral pathways to specialty services

Component Three: Asynchronous Visits

Asynchronous prevention visits provide appropriate dental care when dental access is limited.

- Hygiene assessment using hub and spoke model
- Medical-Dental colocation with dental auxiliaries
- School based services

Teledentistry Care Steps

T

- Triage patients, emergency and new patients

E

- Educate Patients, Families, Caregivers

A

- A-level training for new staff, peer2peer

C

- Comprehensive Care

H

- Home Care + Coordinate Care

DOMAIN TWO: MINIMALLY INVASIVE CARE



The Three Domain Framework

Tele-
Prevention



Domain One builds an accessible, convenient, evidence-based virtual care approach to accompany oral health care delivery using technology for enhanced disease prevention and whole-person health.

Minimally
Invasive Care



Domain Two focuses on minimally invasive care that reverses or slows early disease stages using a program of anticipatory guidance and collaborative decision-making with patients.

Integrated &
Personalized Care

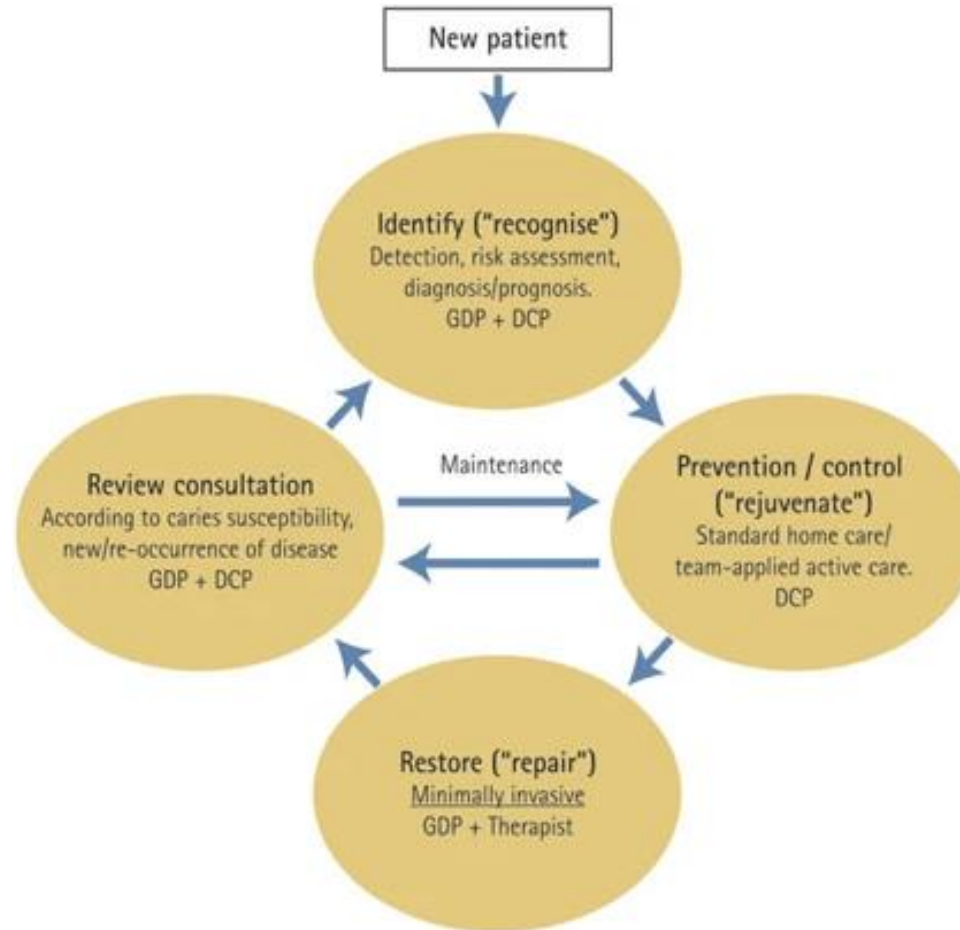


Domain Three introduces personalized oral health care that prolongs the life of hard and soft tissues by reducing tooth/tissue mortality through risk stratification, medical-dental integration, using predictive analytics, and safe, individualized surgical intervention.

Domain Two and Minimally Invasive Care

- Domain Two focuses on minimally invasive care that reverses or slows early disease stages using a program of collaborative decision-making with patients.
 - *Has been successful in community-based programs*
 - *“Commonly used in European routine dental care settings”*
- Successful programs often perform risk-stratified care to identify and discuss health contributors with patients as a care team.
- Using MIC to create remineralization or periodontal attachment gain is particularly valuable notably at the population level in improving systemic health and impacting cost.

Care flow process for minimally invasive care



Is SDF effective in Real World Practice Settings?

SDF has proven effective in numerous clinical trials, but its efficacy has not been well-established in large practice settings.

Examined the survival of SDF at Advantage Dental clinics

- Followed teeth with SDF applications for between 365 and 720 days.
- Failure is defined as a restorative procedure on the tooth, survival is no failure plus a return visit.
- Limited to patients routinely seen.

SDF alone survived 76% of the time

- Effective even with only a single application
- Worked across risk categories
- Failures tended to result in minor restorations

DOMAIN THREE: INTEGRATED & PERSONALIZED CARE



The Three Domain Framework

Tele-
Prevention



Domain One builds an accessible, convenient, evidence-based virtual care approach to accompany oral health care delivery using technology for enhanced disease prevention and whole-person health.

Minimally
Invasive Care



Domain Two focuses on minimally invasive care that reverses or slows early disease stages using a program of anticipatory guidance and collaborative decision-making with patients.

Integrated &
Personalized Care



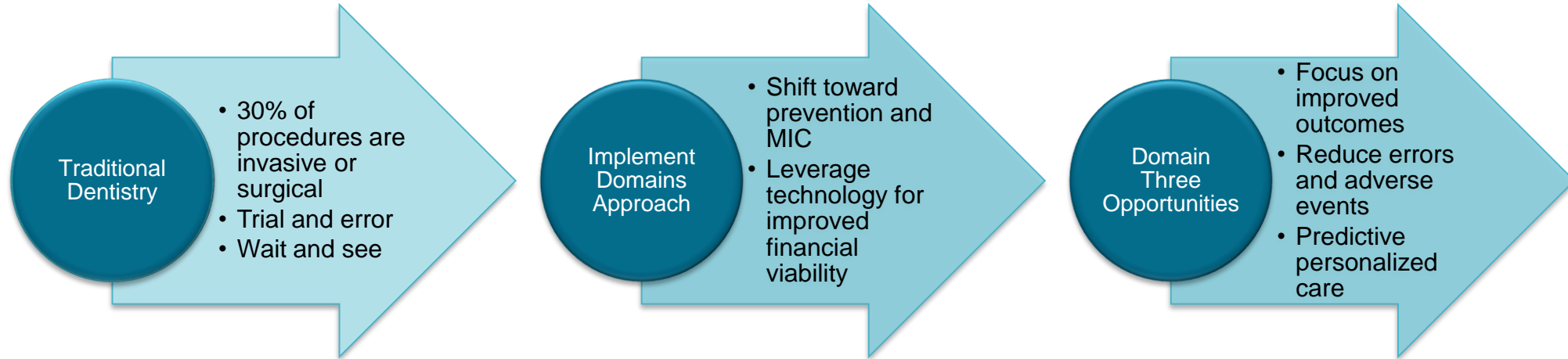
Domain Three introduces personalized oral health care that prolongs the life of hard and soft tissues by reducing tooth/tissue mortality through risk stratification, medical-dental integration, using predictive analytics, and safe, individualized surgical intervention.

What is Personalized Health Care?

Personalized health care (PHC) is an overarching framework for care that unifies predictive technologies with an engaged patient to coordinate care

The primary aim is promoting health and preventing disease.

Personalized care and Futurist Thinking



Evolving Care Models from an Oral Health Perspective: Elements of Integration for Dental Care Teams

Care Delivery
& Coordination

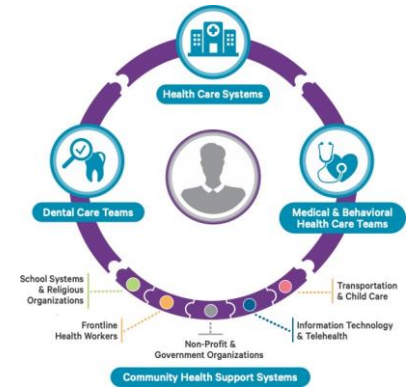
Equity

.....

Data
Sharing

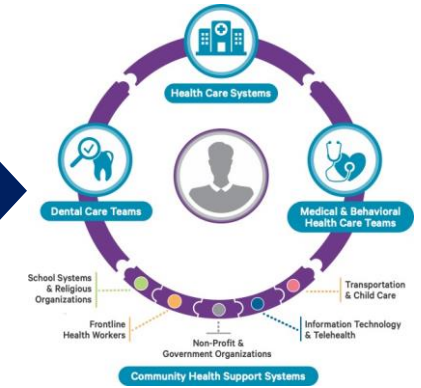
Measurement

Payment



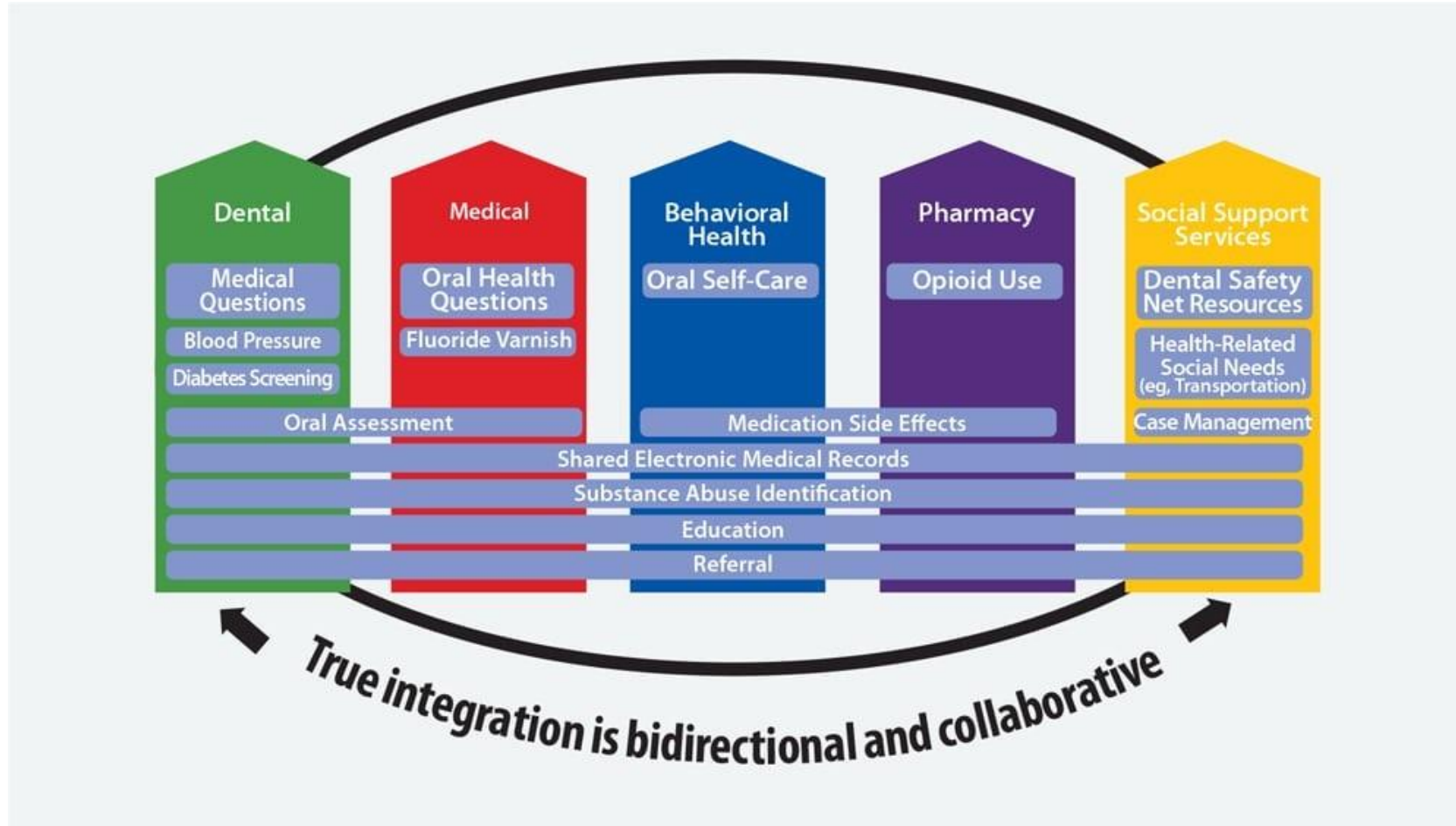
Evolving Care Models from an Oral Health Perspective: Elements of Integration for Dental Care Teams

Current State



	Not Integrated	Low Integration	Moderate Integration	High Integration
Care Delivery & Coordination	No coordination or referrals	Passive referrals Risk assessment Team-based care	Bidirectional referrals Disease management Individuals w/i care teams practicing at top of license	All providers sharing responsibility for care management
Equity	Bifurcated structure to medical and dental coverage	Community engagement Identifying social needs (physical, social, emotional)	Identifying and addressing individual needs (physical, social, emotional)	Person-centered, holistic Strong community engagement
Data Sharing	No data sharing	Practice-to-practice processes for data transfer	System processes for data transfer	Integrated EHRs Interoperability
Measurement	Limited measures (provider performance or population health)	Symmetry or alignment in process metrics (access, service delivery, referral completion, etc.)	Shared process metrics and outcome metrics	Health outcome-based, cost and patient satisfaction levels indicators of success Predictive analytics
Payment	FFS	FFS or lower-level dental APM (including physician-administered oral health services)	APM Shared Performance Incentives	Global Payment and/or Integrated Financing

Domain 3 is a Continuum



Questions?



SHARING EXPERIENCE: THE DIMOCK CENTER

Dr. Shireen Khan

DISCUSSION

**Thinking about implementation of the
Domains approach, what challenges do you
anticipate?**

What aspects of the domains approach have the greatest opportunity to transform oral health at your health center?

Taking Action



Based on what you heard today, please **chat in** one thing that you can take back to your clinic and work on immediately.

WRAP UP & NEXT STEPS

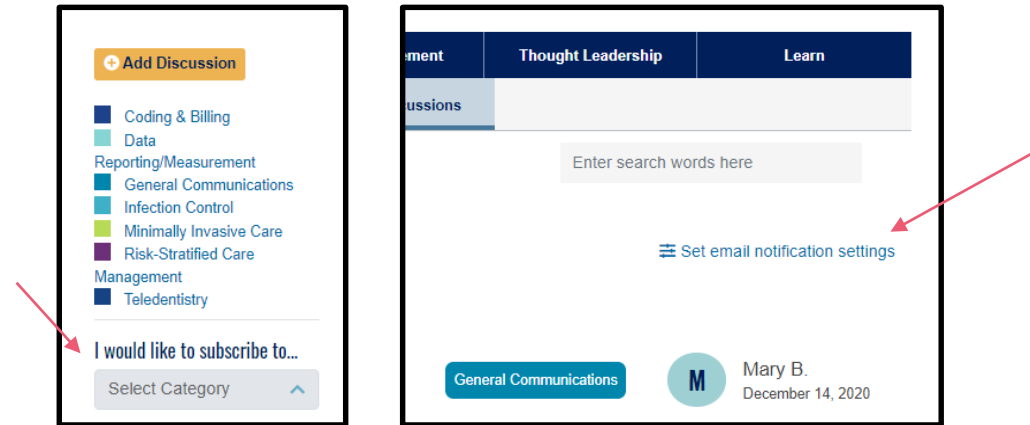
Data Use Agreement



Please complete the Data Use Agreement by 1/25

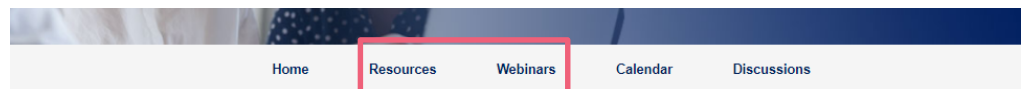
Next Step: Explore the Online Hub

1. Discussion Board: Subscribe to all categories and check your email notification settings



2. Find community call recordings and slides in ‘Webinars’

3. Access prework, glossary, CE opportunities, and other materials under “Resources”



WELCOME TO THE CORHT INITIATIVE ONLINE HUB

The Community Oral Health Transformation (COrHT) Initiative seeks to provide a supportive and engaging learning community for dental professionals as they transform care delivery using the Three Domain Framework for oral health. The Three Domain Framework is intended to:

- Emphasize the need for safe, sustainable, and diverse business models that prioritize oral health as a component of comprehensive patient care.
- Utilize teledentistry to effectively provide and coordinate care for those who lack access to dental care.
- Personalize care based on individual risk factors with a focus on disease prevention rather than a one-size-fits all model (e.g. Caries Risk Assessment)
- Expand the patient's role through engagement in care delivery (e.g. self-management goals)

Over the next six months, the online hub will be used as a centralized source for information on upcoming activities, resources, communication, discussion and more.

CE Opportunities

Looking for more? Here are a few CE opportunities you may want to consider:

1. Elevate Oral Care: [Teledentistry and Minimally Invasive Procedures in the Time of COVID-19 \(1 CE credit\)](#)
2. Elevate Oral Care: [Engaging Patients as Partners with Dr. Matt Allen \(1 CE credit\)](#)
3. [Oral Health Value-Based Care: Transformation in Practice \(1 CE credit\)](#)

Find additional CE opportunities and supplemental resources on the online hub under 'Resources'

DentaQuest[®]

Partnership
for Oral Health Advancement